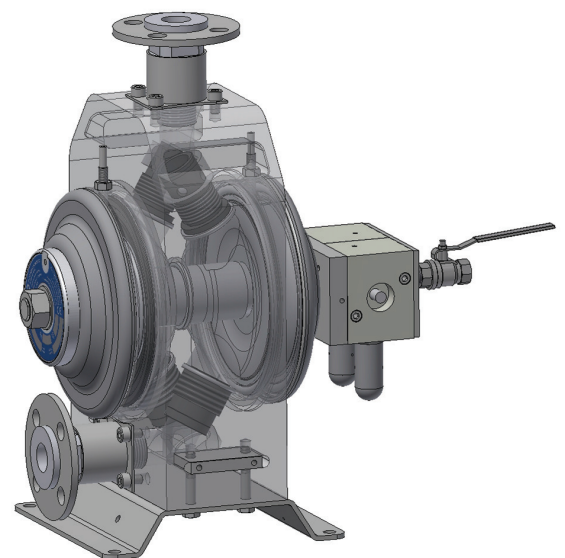


Flotronic - Air Operated Double Diaphragm pump in virgin TEFLON (PTFE), designed for the safe transfer of aggressive chemicals and other hazardous liquids in chemical, pharmaceutical and similar industries.

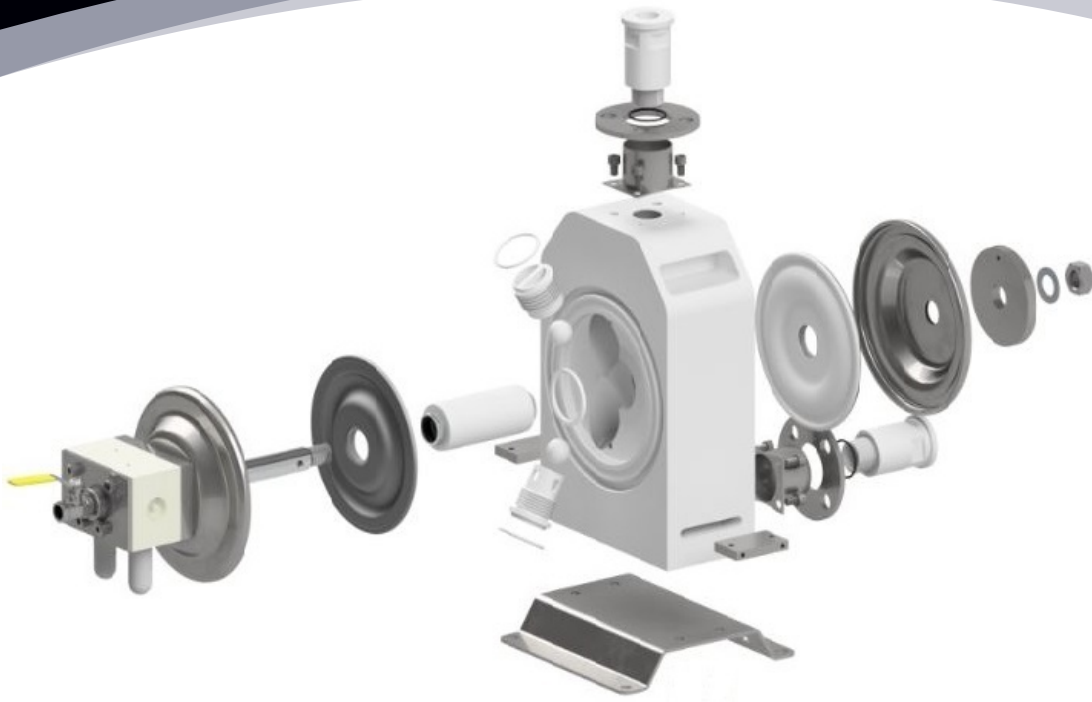
- Machined from one solid block of PTFE - This means no manifold seals and therefore no potential leak paths!
- **ATEX certified** versions are available in both **FDA compliant** PTFE and anti-static PTFE.
- Optional **Diaphragm Rupture Protection** and fully pneumatic **Alarm Systems** are available.
- ‘One Nut’ technology for **easy maintenance** of Diaphragms, Ball Valves, Seats and Air Valve when pump ‘In Line’.
- Flanged and threaded connections available in 1/2" and 1" size – so compatible with existing PTFE-lined pipework
- Dead-Head operation - stop/start against closed/open valve without pressure relief or damage.
- Dry running.
- Self Priming - suction lifts 2 m dry and 8 m wet
- Lubrication free



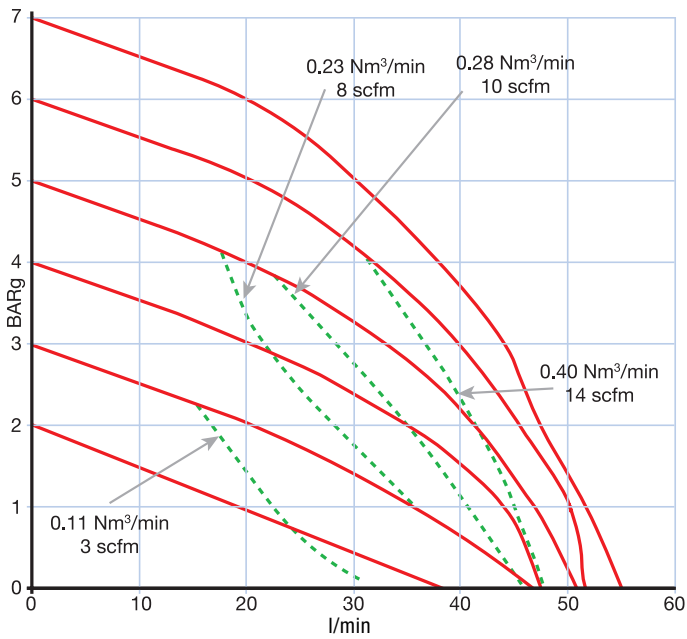
Material of Construction	Virgin PTFE, PTFE (anti-static)
Diaphragms	PTFE, PTFE (anti-static)
Ball Valves & Seats	PTFE, PTFE (anti-static)
Connection Sizes	1/2", 1"
Connection Types	BSPT, NPT, ANSI & DIN flange
Flow Rate	55 Ltr/min (1/2"), 100 Ltr/min (1")
Maximum Discharge Pressure	7.2 Bar
Maximum Solids	3 mm
Maximum Suction Lift*	Wet: 8 m; Dry: 2.0 m
Maximum Fluid Operating Temperature	80 °C
Pump Weight	25 kg
Standards Met / Compliance	EC 1935/2004, 2023/2006
Hazardous Location Approved (optional)	II 2 G EXc IIB T4 Gb, II 2 D EXc IIIB T135°C Db



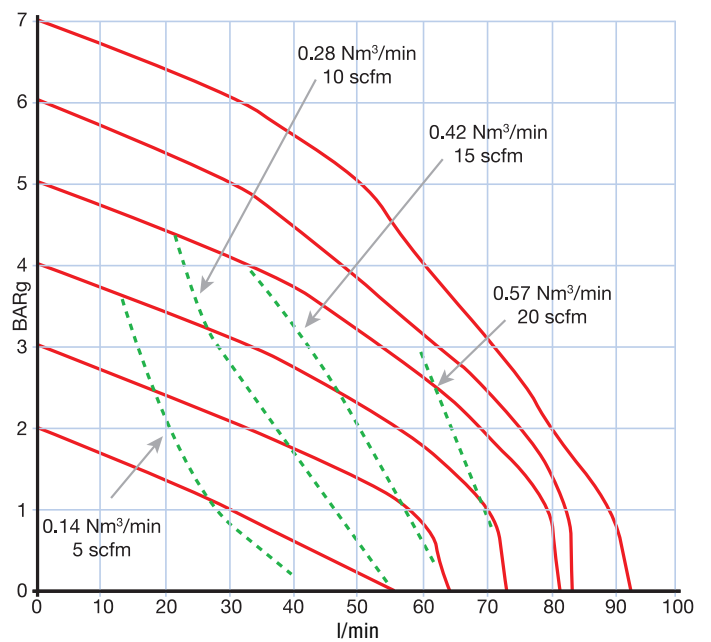
\*special version; ATEX Directive compliant up to Gas Group IIC



1/2" connection - 7" diaphragm



1" connection - 7" diaphragm



'Minichem' Virgin & Anti Static PTFE										
Size	A	B	C	D	E	F	G	H	Wt/kg	Diaphragm Diameter
1/2" - 1"	282	55	368	130	198	220	116	196	23	7"

Dimensions in mm

